

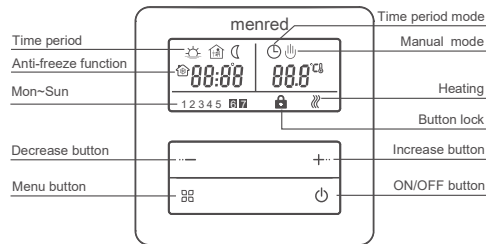
LCD Digital Thermostat can work in Manual mode or Energy-saving mode. It can be used in electric heating control system.

Model	Current	Description
TH-26	16A	Control and limit by double sensors

## Parameter

Voltage 230V  
 Consumption:<1W  
 Temperature control range:5-90 °C  
 Temperature limitation range:16-60 °C  
 Temperature switch deviation:Default 1 °C  
 (0.5-10 °C adjustable )  
 Ambient temperature:0-50 °C  
 Protection class:IP20  
 Load capacity:16A  
 Connecting Cable:RVV0.5  
 Housing material:Anti-flame PC

## The display interface and user settings



- 1.Switch on and off  
Press button .
- 2.Temperature setting  
Press button to set temperature.
- 3.Clock setting  
Press button and together for 5s to enter clock setting mode. Press button to switch parameter and press button to revise.
- 4.Manual / Time period mode selection  
Press button to switch between Manual mode and Time period mode .
- 5.Button lock  
Press button together for 5s to lock or unlock the buttons.

## Advanced Settings

These settings are for professional technical personnel.Usually finished at the initial installation.Press button together when the thermostat is switched off,and then switch on the thermostat to enter Advanced Settings. Press button to switch menu. Press button to exit current operating mode.

No.	Symbol	Function	Adjust by button +or -
1		Temperature calibration	Temperature adjustment
2		Sensor mode	IN: built-in sensor OUT: floor sensor ALL: controlled by built-in sensor and limited by floor sensor (Default)
3		Floor limit temperature setting	16~60 °C.Default 45 °C
4		Switch deviation	0.5~10 °C.Default 1.0 °C
5		Anti-freeze function	Default OFF The setting range is 5~10 °C after activation
6		Set the upper temperature limit	Set range 16~90 °C. Default 35.0°C
7		Rest day selection and shut off Weekly program	5(rest on Sat and Sun. Default) 6(rest on Sun ) 7(no rest day ) OFF (shut off Weekly program)
8		Thermostat status when power on	ON: thermostat is in off mode OFF: thermostat stays in the same mode before power off (Default)
9		Restore to factory settings	Press button until  is displayed

## Operating mode description

- Manual Mode  
Thermostat works according to the manual set temperature. Not controlled by program.
- Period Mode  
Weekly recycle. You can set 4 time periods and corresponding temperature every day for auto operation. Time period, temperature, rest days can be programmed upon the customers' request.
- Temporary Mode  
Thermostat is temporarily switched to manual mode from current time period mode. Thermostat will automatically restore to time period mode when the next time period comes.

## Sensor malfunction

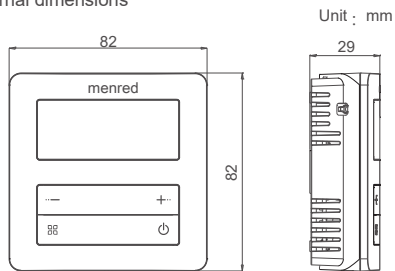
It means the internal sensor malfunction when ER0 appears.

## Period programming

Hold key for at least 5s to enter period programming

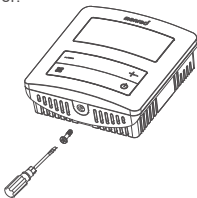
Option	Time Period	Symbol	Default Time	Revise	Default Temp.	Revise	
	Working days	1		06:00	+	20°C	+
		2		08:00		-	
		3		17:00	Revise time	22°C	Revise temperature
		4		22:00		-	
	Rest days	1		08:00	Revise time	22°C	Revise temperature
		2		23:00		-	

## External dimensions



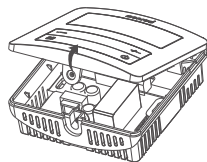
## Installation Diagram

- 1 Remove the screw at the bottom of thermostat by screwdriver.

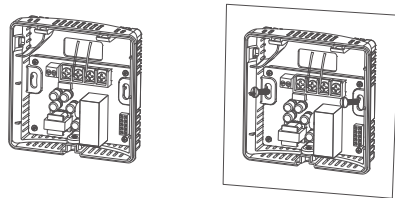


5-8

- 2 Open the front panel as shown in the following picture.

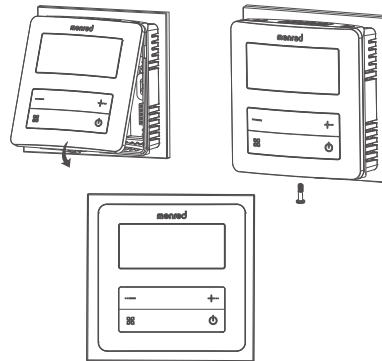


- 3 Connect the wires correctly according to the wiring diagram and fix power base on the wall by screws.



6-8

- 4 Close the front panel and tighten the screw as shown in the following pictures to finish installation.

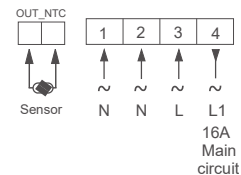


**Attention :**  
This thermostat can be used in full load operation at a place where altitude is no higher than 2,500m. When thermostat is installed in a place where the altitude is between 2,500 and 4,200m, the external rated load should be no bigger than 80% of the nominal power of the thermostat.

7-8

## Wiring diagram

TH-26



## Installation Notes

- > Power must be off during installation.
- > Please connect the wires correctly according to diagram.
- > It's better that the installation height is 1.4m or on the same level of other wall switches.
- > Do not install thermostat at non-ventilated location, for example corner or behind the door.
- > Do not install thermostat at a place with strong airflow or near cold and heat source.
- > Sundries like water, cement slurry, metal particles are forbidden going inside thermostat. It will damage the thermostat.

8-8